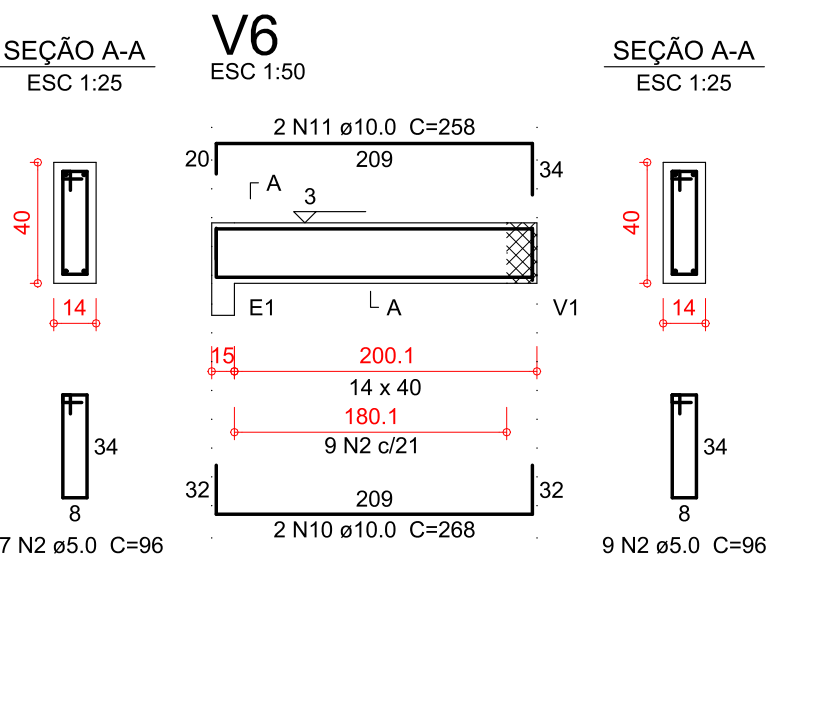
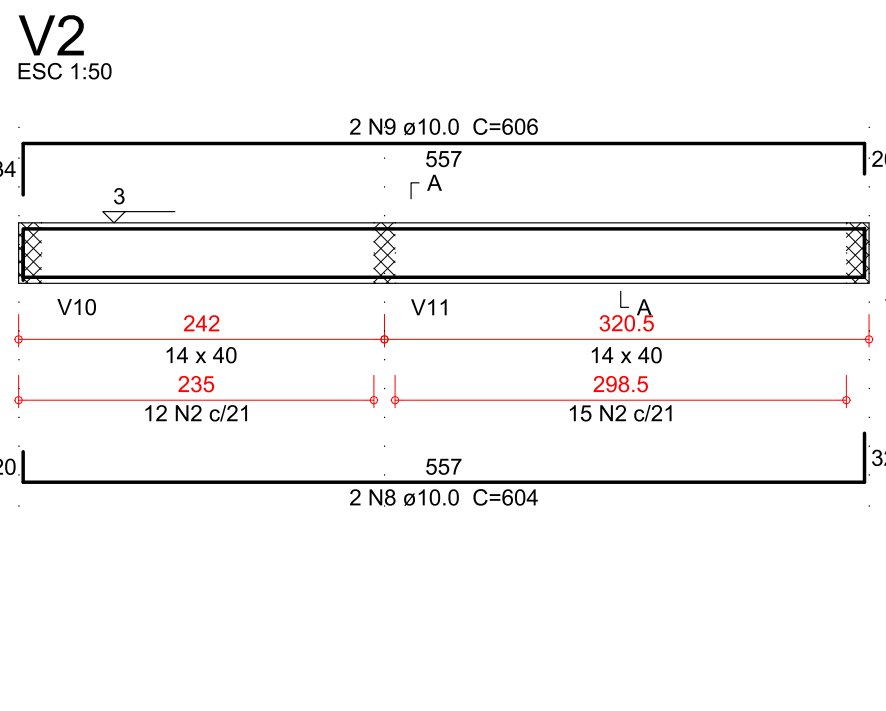
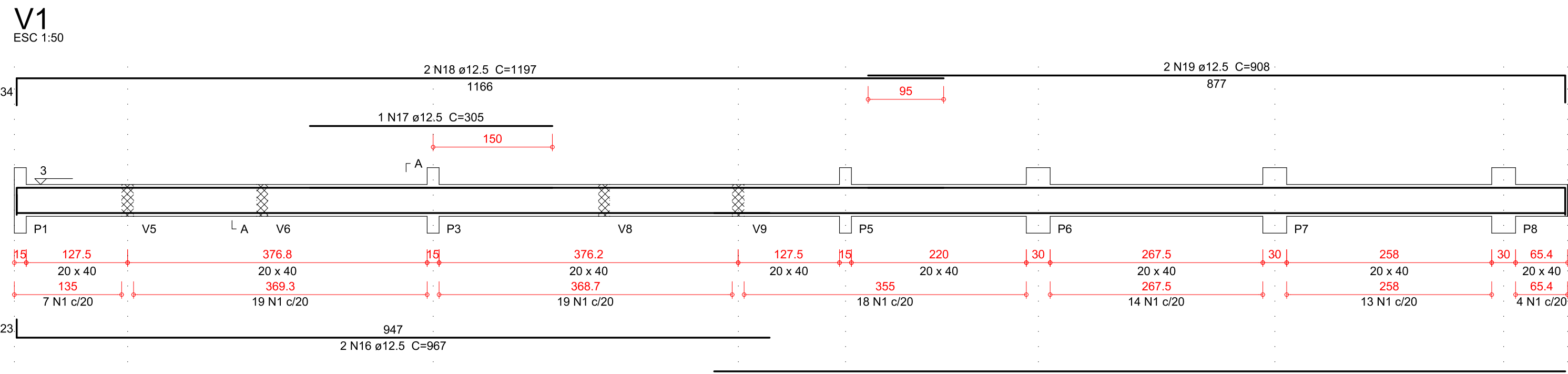


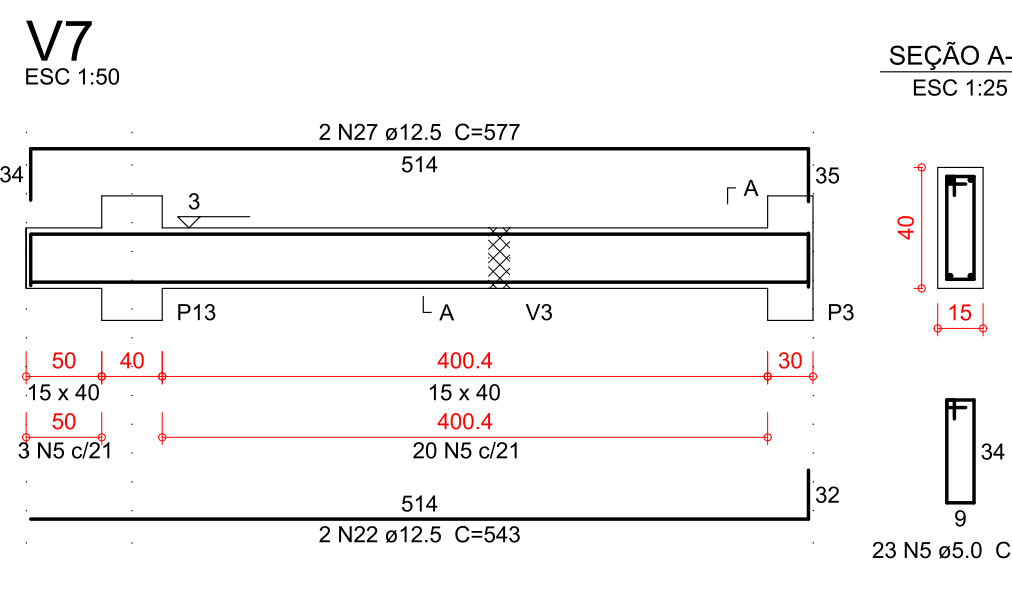
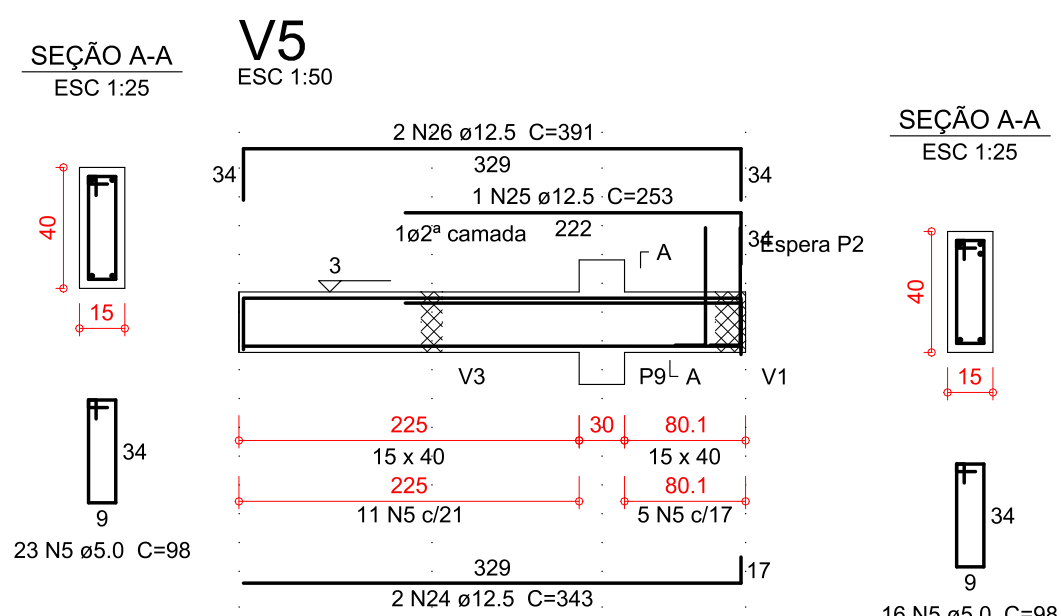
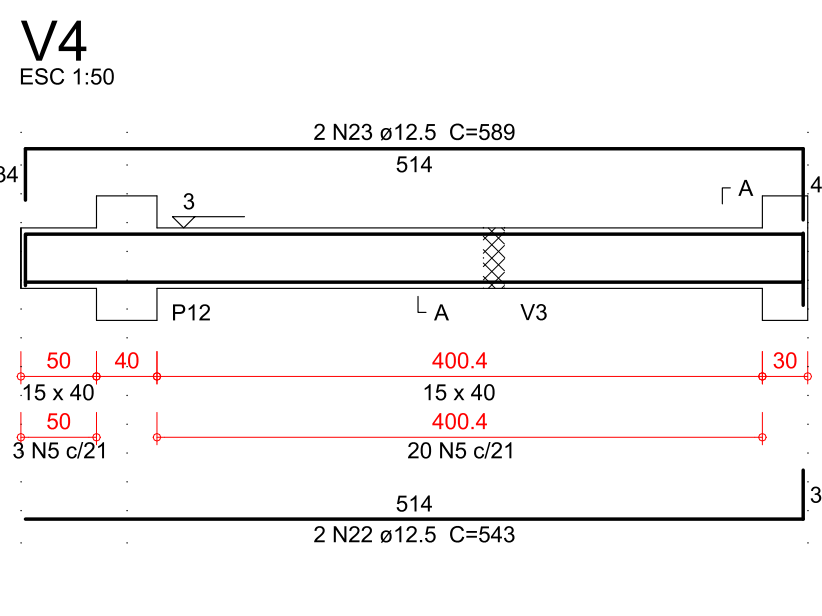
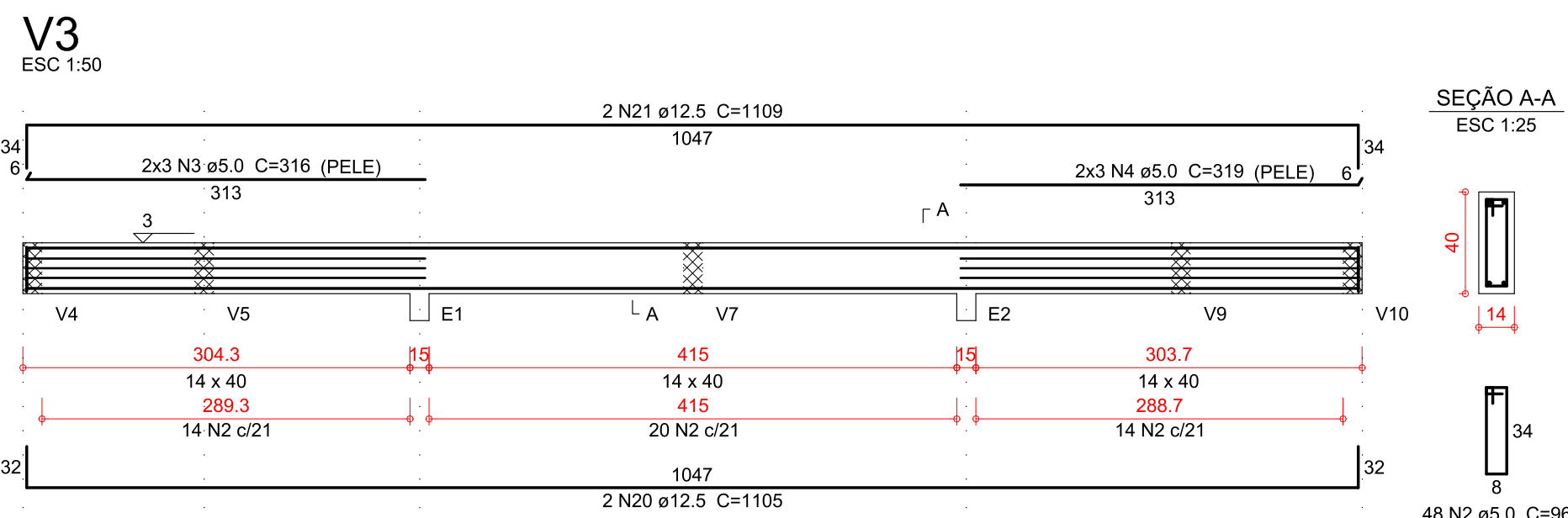
ARMADURAS DAS VIGAS DO PAVIMENTO TÉRREO

ESCALA INDICADA



Relação do aço

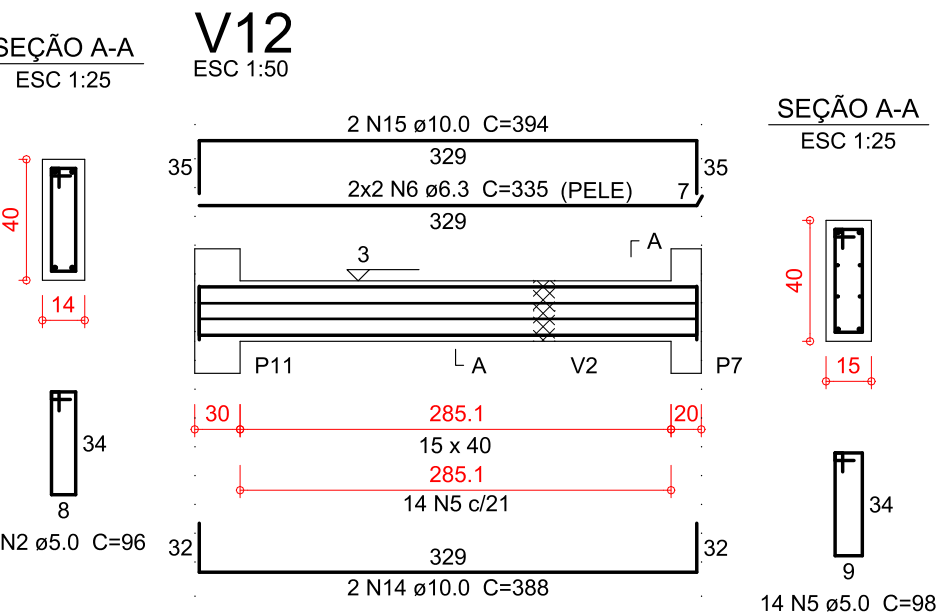
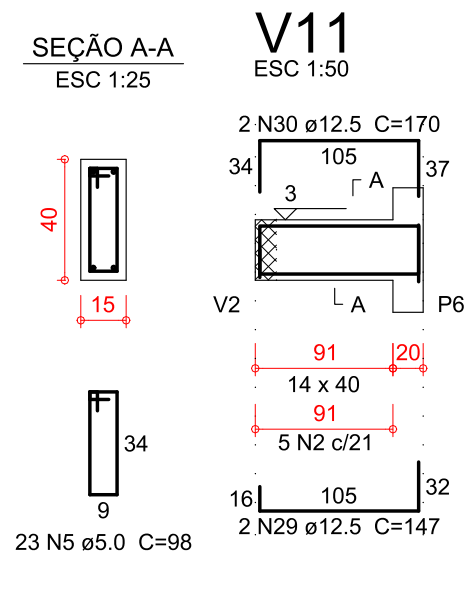
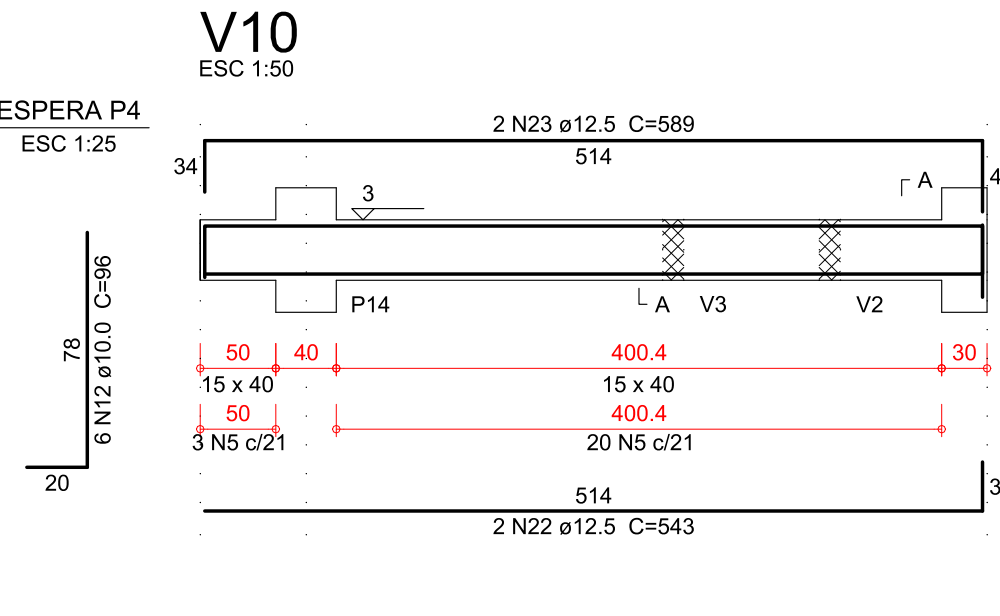
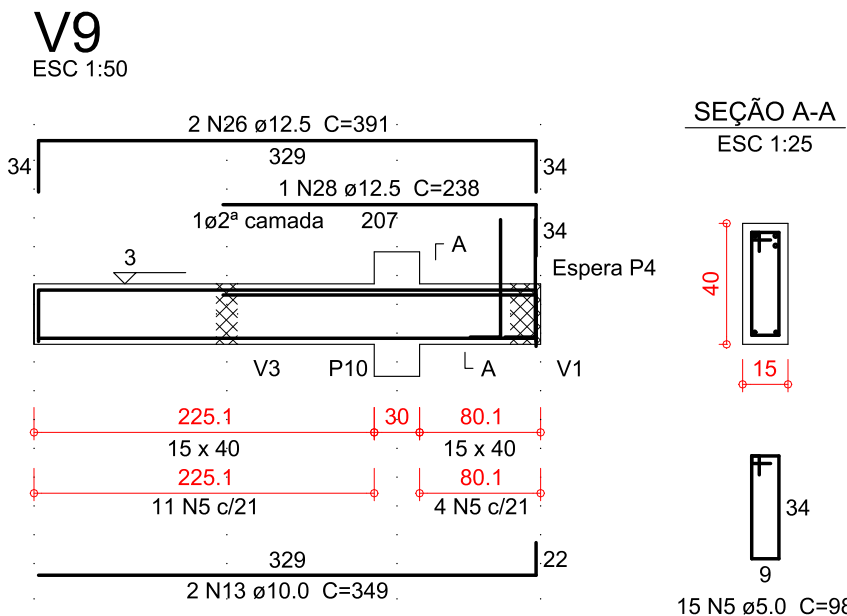
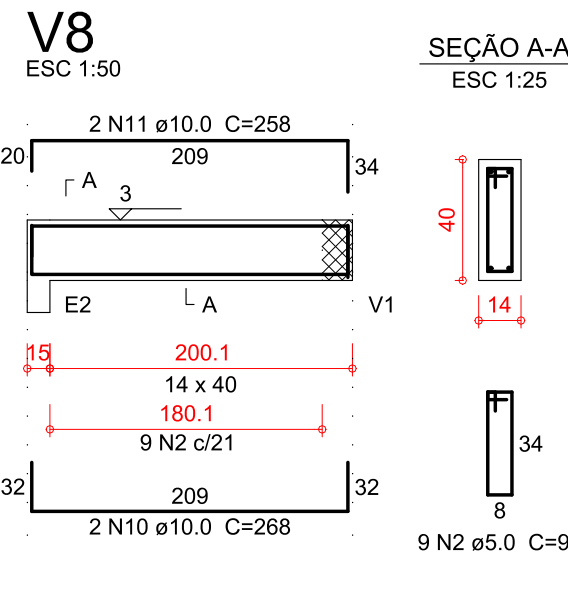
AÇO	N	DIAM (mm)	QUANT	C.UNIT (cm)	C.TOTAL (cm)
CA60	1	5.0	94	108	10152
	2	5.0	96	9408	
	3	5.0	6	316	1896
	4	5.0	6	319	1914
CA50	5	5.0	114	98	11172
	6	6.3	4	335	1340
	7	10.0	2	1071	2142
	8	10.0	2	604	1208
	9	10.0	2	606	1212
	10	10.0	4	268	1072
	11	10.0	4	258	1032
	12	10.0	12	96	1152
	13	10.0	2	349	698
	14	10.0	2	388	776
	15	10.0	2	394	788
	16	12.5	2	967	1934
	17	12.5	1	305	305
	18	12.5	2	1197	2394
	19	12.5	2	908	1816
	20	12.5	2	1105	2210
	21	12.5	2	1109	2218
	22	12.5	6	643	3258
	23	12.5	4	589	2356
	24	12.5	2	343	686
	25	12.5	1	253	253
	26	12.5	4	391	1564
	27	12.5	2	577	1154
	28	12.5	1	238	238
	29	12.5	2	147	294
	30	12.5	2	170	340



Resumo do aço

AÇO	DIAM (mm)	C.TOTAL (m)	PESO ± 10 % (kg)
CA50	6.3	13.4	3.6
	10.0	100.8	68.4
	12.5	210.2	222.7
CA60	5.0	345.5	58.6
PESO TOTAL (kg)			
CA50		294.7	
CA60		58.6	

Volume de concreto (C-25) = 4.31 m³
Área de forma = 64.19 m²



A1(841x594)
1:5 - unid. cm
Color Penel Weight
1 7 0.1
2 7 0.2
3 7 0.3
4 7 0.4
5 7 0.5
6 7 0.6
7 7 0.7
8 7 0.8
9 7 0.9
10 10 0.0
11085 1082 0.9
253 253 0.2
254 7 0.8
255 7 0.1

REVISÃO:	DATA:	DESCRIÇÃO:	RESPONSÁVEL:
-	-	-	-
SOLUÇÕES INTEGRADAS PARA ENGENHARIA			
GERENCIAMENTO DE PROJETOS		CAPACITAÇÃO E ORIENTAÇÃO TÉCNICA	
ANÁLISE DE INVESTIMENTOS IMOBILIÁRIOS		PROJETOS COMPATIBILIZADOS	
OBRA: REVITALIZAÇÃO DO ESPAÇO MASCARENHAS - SUBESTAÇÃO			
PROPRIETÁRIO: PREFEITURA MUNICIPAL DE JUIZ DE FORA			
REFERÊNCIA: ARMADURAS DAS VIGAS DO PAVIMENTO TÉRREO			
ESCALA: INDICADA	DATA: OUT-2021	DESENHO: CAD	ARQUIVO: 1958JUI-STR-DCT-PE-estruturalSubstação-R02
PROJETO: ENG. CIVIL JACKSON KREUSCH		CREA - PR 89866/D	
RUA HEITOR STOCKLER DE FRANÇA, 396 CJ 1704		TEL 1 (41) 3018-9518	
EDIFÍCIO NEO BUSINESS - CENTRO CÍVICO - CEP: 82590-300		TEL 2 (41) 3018-8508	
WEBSITE: www.jsengenharia.com.br		E-MAIL: projetos@jsengenharia.com.br	